

HYBRID / ZOOM INSTRUCTIONS

SOJOURNER'S SUNDAY SCHOOL CLASS

ROVING APPLE TV – Kendra or David will place the ROVING APPLE TV in the Sojourner's classroom by Sunday Morning at 9 a.m.

APPLE COMPUTER – Retrieve Kendra's APPLE COMPUTER and POWER CORD from Kendra's desk drawer in the office.

START CLASS AT 9:45 a.m.

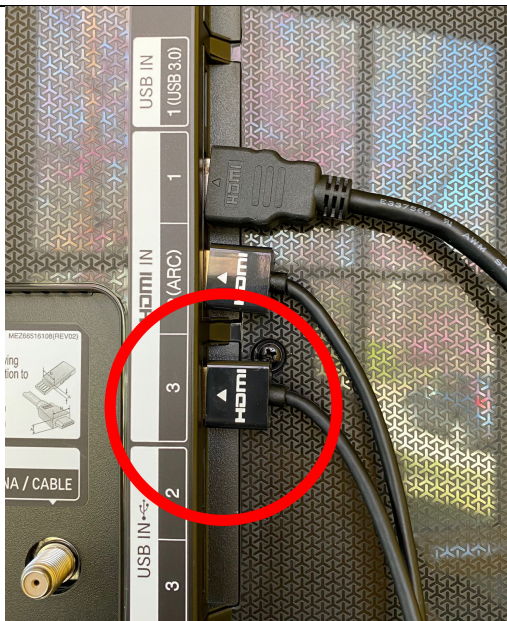
Plug the Roving Apple TV into a working electrical outlet.

Plug the Apple Computer into a working electrical outlet.

Use this control to **RAISE**/LOWER the TV.

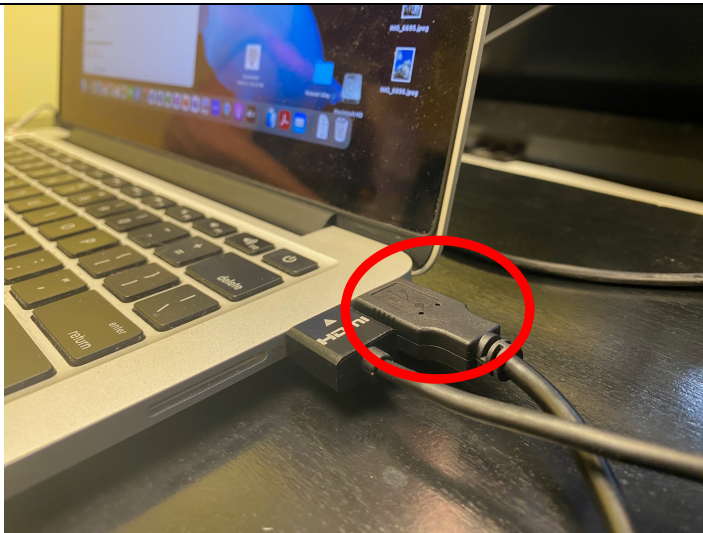


Make sure the HDMI cable is connected to the HDMI 3 slot on the back of the Apple Roving TV.





Make sure the other end of the HDMI cable is connected to the HDMI slot on the Apple Computer.



Position the YETI MIC/BOX and plug the USB connector into the computer's USB.



Use the LG TV Remote control to turn the TV **ON/OFF**.



The computer screen should automatically display on the Roving Apple TV Screen.

IF IT DOES NOT...

Select the **SOURCE** button on the LG TV Remote control and select HDMI 3 as the source.

worship@baccdoc.org

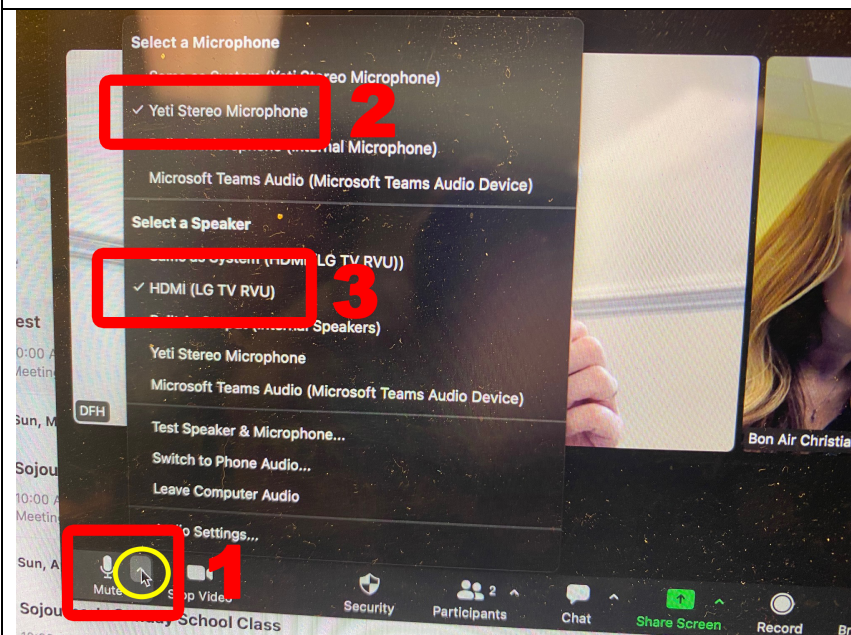
PW: **Disciples2071**

Meeting ID: **86392774583**

Passcode: **016145**

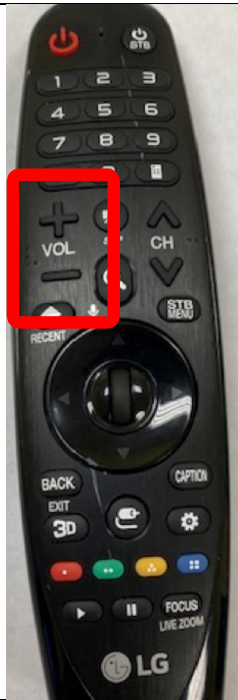
ON COMPUTER:

- Start the ZOOM MEETING 15 minutes before class begins (9:45 a.m.)
- Position the Computer for best room view.



ENSURE AUDIO MICROPHONE AND SPEAKER ARE SETUP PROPERLY:

1. Click on the small arrow to the right of the microphone symbol at the bottom of the Zoom screen. (See yellow circle on photo.). **A menu will appear.**
2. On the menu, under "Select a Microphone" – Select **"Yeti Stereo Microphone"**
3. And, under "Select a Speaker" – Select **"HDMI (LG TV RVU)"**



- When the first person logs in to the Zoom meeting, do an audio check and use the LG TV Remote control to **ADJUST THE VOLUME** for the Zoom Attendees.

- Click on icon to enlarge the ZOOM window to **FULL SCREEN**

END CLASS AT 10:50 a.m.

ON COMPUTER:

- Click ESC key to reduce size of Zoom window.
- **END ZOOM MEETING**
- Shut down computer and leave in Kendra's desk drawer in the Office.



Use the LG Remote to turn the TV **ON/OFF**.



Use this control to RAISE/**LOWER** the TV.